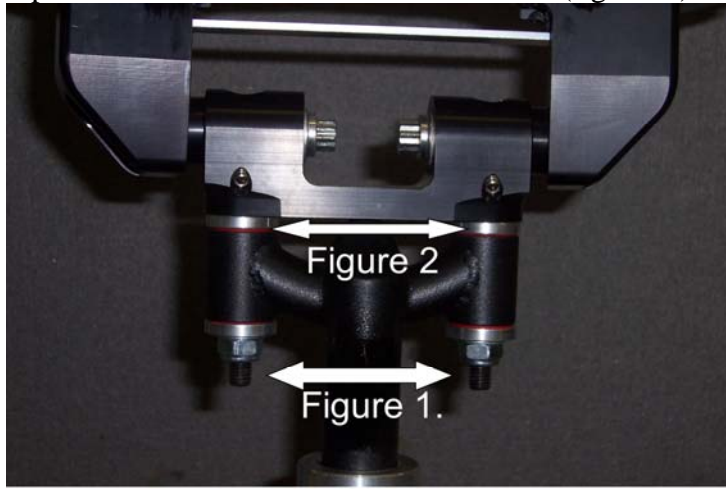




Thank you for purchasing ATV Four Play's Soft Bars. We hope this will be the last set of handlebar's you'll ever need. **PLEASE READ ALL THE MOUNTING INSTRUCTIONS!!!!!!!!!!!!!! You should have a qualified mechanic install these bars.**

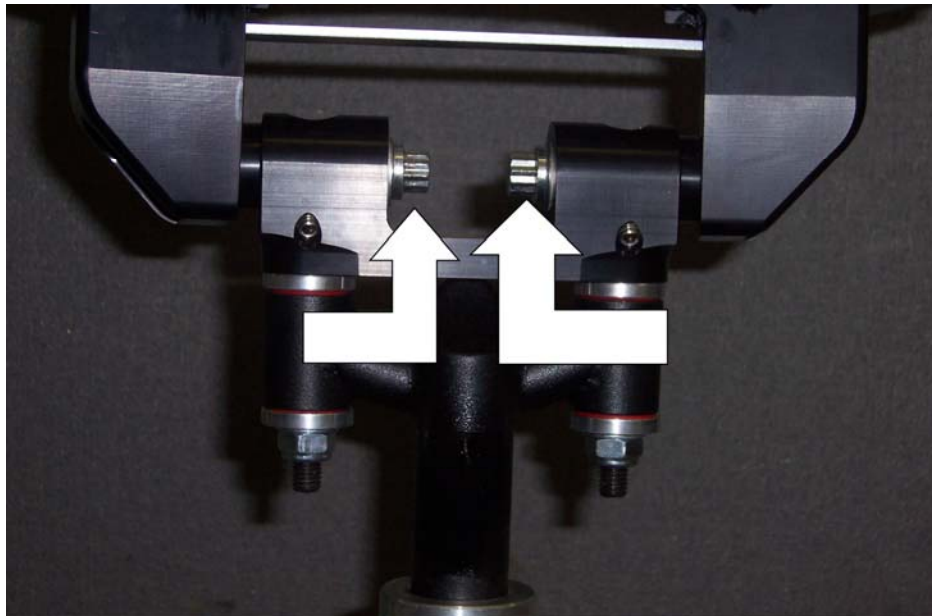
Step #1.

Mounting the Soft bars to an aftermarket steering stem. (Figure 1) Install the two 10mm bolts on the Soft Bars through the anti vibe aluminum spacers. Tighten the Soft Bar lock nut until it bottoms out onto the spacers. Be certain to use the four collars. (figure 2.)



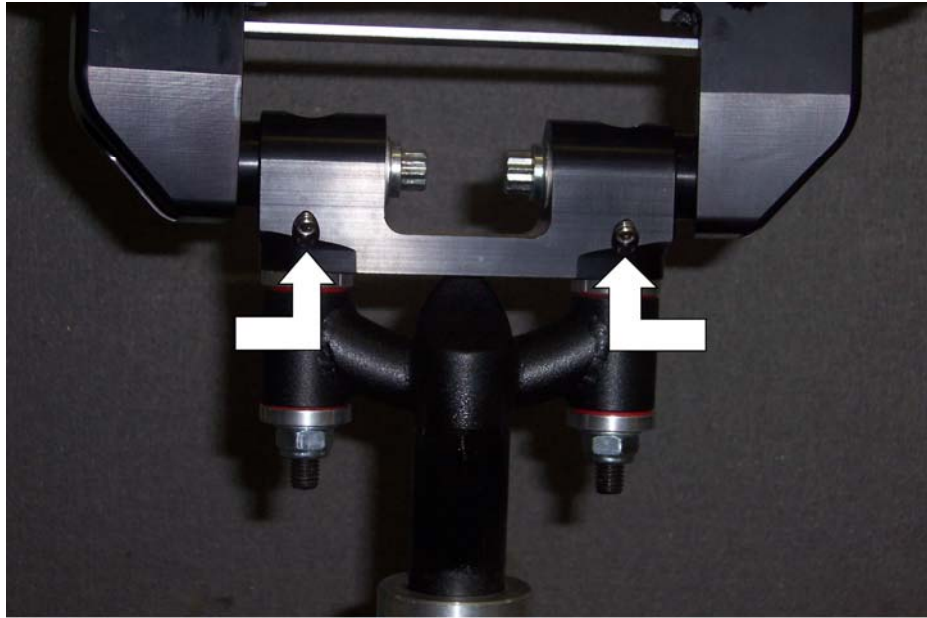
Step #2

Once the Soft Bars are securely mounted to the steering stem. Position the bars forward or backwards on the pivot points. After you have found the comfortable position. Tighten the ½" 12 point bolts. **These must be tightened to 75 foot pounds.** If you do not have a torque wrench that fits in the Soft Bars you may want to locate one. It is possible to use a ½" or 13mm 12 point wrench and install a pipe on the end of it for additional leverage to achieve **YOUR guess** of 75 foot pounds.



Step #3.

After the 1/2" 12 point bolt is tightened to 75 foot pounds. Remove the two 5/16" set screws and apply a thread locker and re install the set screws. Tighten the set screws to 12 foot pounds.



Step #4

Adjusting the dampening. Locate the two 5/16" adjustment screws under the Soft bars. The adjustment screw is the one in the vertical position. By turning the adjustment in a clock wise manner you will be making them harder. To make them softer turn the screw in a counter clock way.

